

Metro

User guide: Raising the signal post

This guide will show you how to raise and secure the signal post on Metro temporary traffic signals.

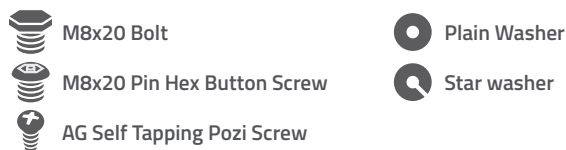
PARTS



TOOLS REQUIRED



CONSUMABLES



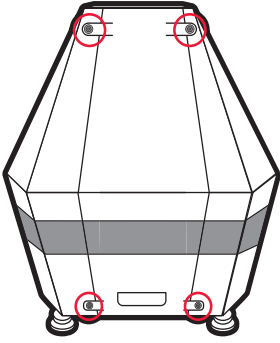
Bolt Assembly

1. M8 Bolt head
2. M8 Star washer
3. M8 Plain Washer

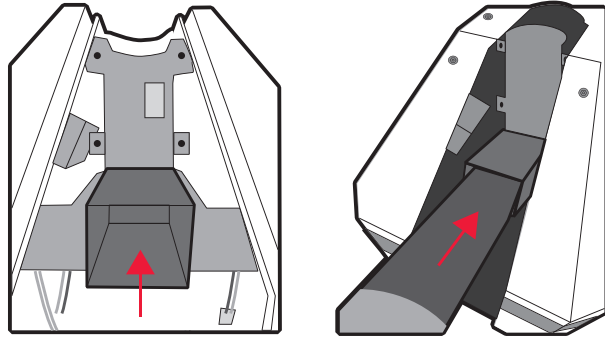


Need assistance? Please call 0345 460 9999

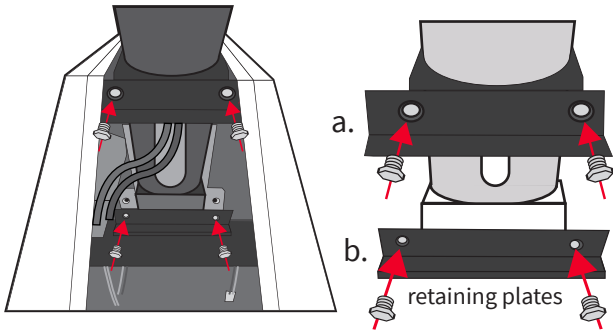
1. Remove the side panel by unfastening the retaining safety bolts



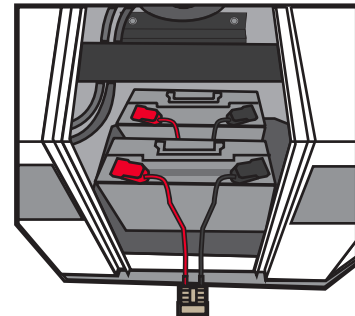
2. Insert the signal head and post assembly in to the post slot located in the base unit and raise the pole upright.



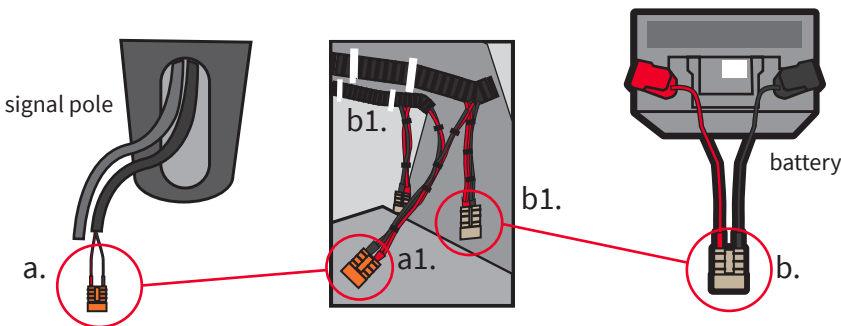
3. Whilst supporting the upright pole, fasten the metal retaining plates to the base unit using the bolts and washers provided.



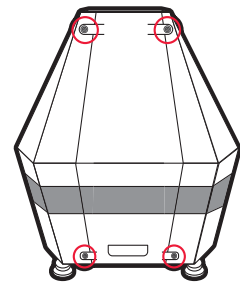
4. With the signal head cable loom positioned aside, insert the 12V battery(s) into the base unit.



5. Connect the signal head loom to the power loom using the coloured Anderson connectors. Connect up to 6 batteries to the remaining grey Anderson connectors.



6. Replace the side panel by fastening the retaining safety bolts



7. Connect the signal head and antenna looms to the controller.



8. Mount the controller by slotting top first inside the casing, following by the bottom. Then fasten using the remaining bolts. **Metro is now ready to initiate!**

