

pike<sup>®</sup>  
signals Ltd.



## Public Highway Traffic Management

Mobile | Temporary | Portable | Pedestrian

# **XL Eclipse** Trailer<sup>®</sup>



Solar assisted Tandem unit

A unique split trailer, designed for use in a variety of applications. Cable-less radio technology enables quick set up time with easy to operate control panels. A combination of photovoltaic panels and battery power, enables the unit to operate silently none stop for months at a time\*, making these units ideal for a wide range of traffic control situations and a popular choice for many hire companies and construction site operators. Fully compatible with other Pike radio linked controllers to ensure ultimate utilisation.

Designed in partnership with Solar Highways Ltd. the UK patent holder for solar assisted portable traffic signals





-  Solar Powered
-  Portable
-  Easy set up
-  Silent
-  Parking brakes
-  Safe set up oncoming traffic
-  Led low power use
-  Radio link
-  Battery powered

  
 N.B. iLight is available as an optional extra either at time of purchase or as an up-grade package at a later date.

## Construction

355° rotating canopy manufactured from “Zintec” mild steel, galvanised chassis and signs basket. Strong 750kg rated beam axle suspension. Ideally balanced and light weight, make the unit manoeuvrable and easy to tow. Detachable drawbar for added security on site, and easy replacement in the event of damage. Secure battery compartment.

## Equipment

Each half trailer is self contained having an independent power supply, a single fixed signal head and latest technology vehicle detector with no exposed wiring. Low power consumption LED optics and night-time dimmers. Controllers are located at the rear of the unit ensuring set-up is conducted facing oncoming traffic flow, to optimise user safety.

\*subject to ideal site conditions

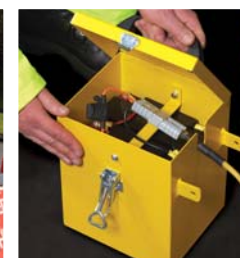
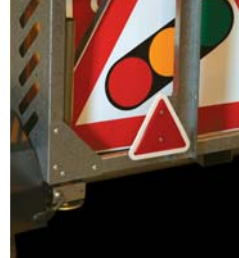
## Power Supply

Each half houses two highly efficient photovoltaic panels with intelligent charge converter unit and battery status indicator. Four individually fused 12 volt batteries are contained within the unit. The in-built monitoring system ensures the batteries are re-charged in situ during daylight hours thus optimising the battery life and condition.

## Operation

Radio linked XLMultiphase and/or XL 2 phase controllers providing a quick set up with each half having the capability of being easily moved. Particular applications being moving roadwork’s, surfacing or time restricted sites. Ideally suited to residential or noise sensitive areas.

# pike<sup>®</sup> signals ltd.



**TRAINING**  
Want to be trained on our equipment?



**CUSTOMER SUPPORT**  
Help is at hand when you need it!



**SERVICE & REPAIR**  
We offer a wide range of traffic control services



Pike Signals Ltd. Units 7, 9 & 11 Phoenix Business Park, Avenue Road, Aston, Birmingham B7 4NU  
Tel: +44(0)121 359 4034 Fax: +44(0)121 333 3167 email: [enquiries@pikesignals.com](mailto:enquiries@pikesignals.com)

[www.pikesignals.com](http://www.pikesignals.com)

Pike Signals Ltd reserves the right to change or alter product specifications without prior notice. It is a policy of Pike Signals Ltd to seek Registered Design and/or Patent Protection for its products. Where required equipment is fully Type Approved to relevant Department of Transport specifications.