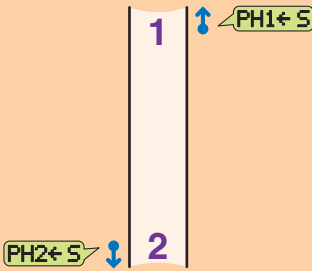


Please see the Operator's Guide for full details of setup and operation

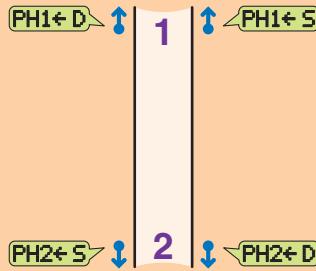
1 Set up all signal heads, cones and signs according to Highways Agency regulations.

2 approaches, 2 phases



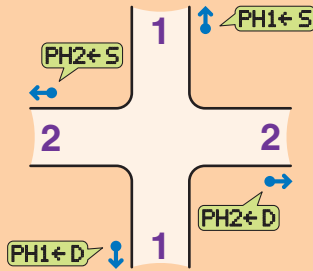
One head per approach

2 approaches, 2 phases



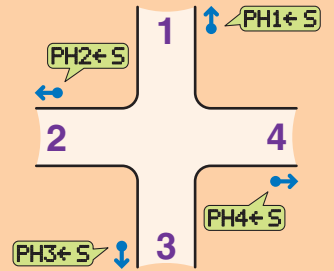
Two heads per approach

4 approaches, 2 phases



Two opposed heads

4 approaches, 4 phases



One head per approach

2 For each approach, measure the distance to the WAIT HERE sign furthest away.

3 On each remote XL signal head:



Switch on the signal head at the control panel.

NOTES

The XL Multiphase Controller should be OFF at this stage.

If a signal head is directly connected to the XL Multiphase Controller, it will automatically become the primary head on phase 1 (PH1+S).

```
PLEASE SELECT ONE
OF THE FOLLOWING
XL TWO PHASE +
MULTIPHASE
```

Press to choose (+) MULTIPHASE

Press to proceed.

Use row S for a single or primary signal head.
Use row D for a second signal head in a phase (if used).

```
USE UP & DOWN KEYS
PH1 PH2+PH3 PH4 S
PH1 PH2 PH3 PH4 D
PRESS +/- KEY
```

Press to choose (+) the correct phase number (PH1 - 4) for this head, in either row S or row D. Press to proceed.

```
MULTIPHASE OPERATION
THIS SIGNAL HEAD
PHASE TWO SINGLE
IF OK PRESS +/- KEY
```

The screen will confirm your settings. If correct, press to proceed.

If not, use to change.

```
MULTIPHASE OPERATION
PHASE TWO SINGLE
WAITING FOR MASTER
PLEASE WAIT
```

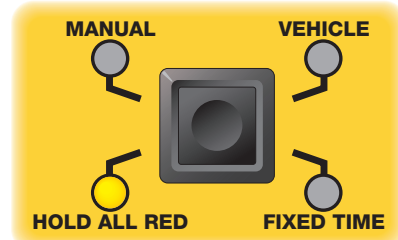
The head is now ready and waiting for control information from the XL Multiphase Controller. No signal lamps will be lit at this stage.

Repeat for all other remote heads.

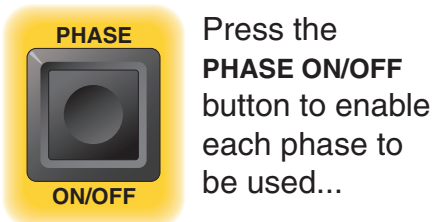
④ Press the ON/OFF button to power on the XL Multiphase Controller.



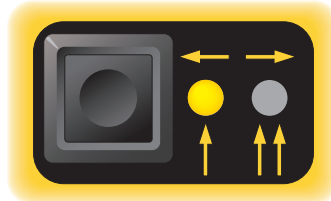
⑤ Press the operation mode button repeatedly until HOLD ALL RED is lit.



⑥ For each phase:

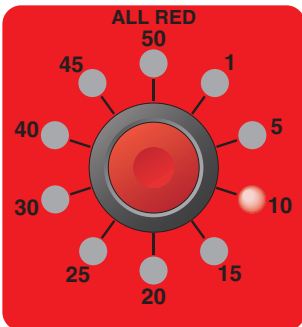


Press the PHASE ON/OFF button to enable each phase to be used...

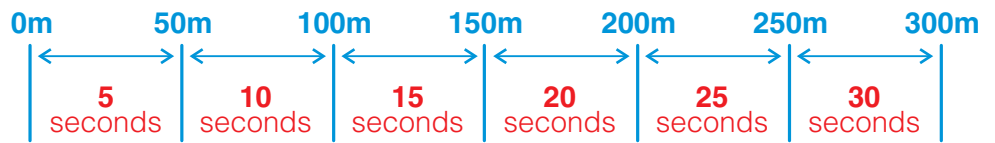


...then, press this button to choose the appropriate phase mode:

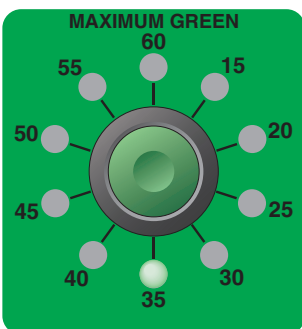
- 1 appr, 1 head per appr.
- 1 appr, 2 heads per appr.
- 2 appr, 1 head per appr.



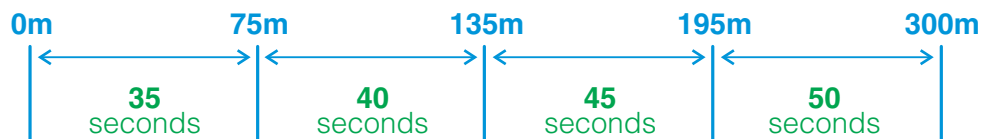
Using the measurement taken earlier (from this phase's WAIT HERE sign to the WAIT HERE sign furthest away), set the appropriate ALL RED time:



NOTE: On steep gradients, increase the ALL RED time by 5 seconds for the uphill phase(s).



Using the measurement taken earlier (from this phase's WAIT HERE sign to the WAIT HERE sign furthest away), set the appropriate MAXIMUM GREEN time:



Repeat for all other active phases.

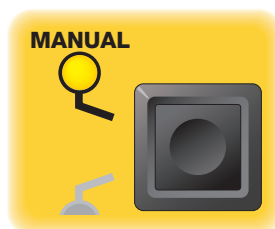
⑦ Press the RUN button.



In turn, each approach will display amber then red.

⑧ If traffic is tailing back significantly on one approach:

Change to MANUAL...



...press the DEMAND button for that approach...



...then, as traffic flows, change to VEHICLE.



If traffic is evenly spread, change straight to VEHICLE.